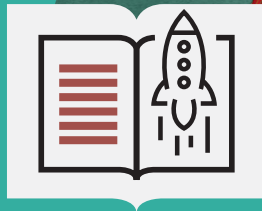


FORSINA

Forsina Anatomy VR

Quick Manual



About Forsina

“FORSINA” **the biggest medical library in the world**, aims to assist universities, students, healthcare professionals, and even patients in receive quality and accurate medical information, and it provides different tools to easily view, study, and understand human anatomy for male and female using 3D, Virtual Reality, and real CT scan models.

We have the biggest medically accurate content written developed by our anatomy experts and doctors, offering more than 1000 histology images, 50000 landmarks, 20000 traceable blood vessel and nerve paths, 500000 CT images and over 5 million medical words.

Forsina Products

Forsina has created software that mainly focus on the anatomy of the human body and histology in addition to radiology and Dicom convertor for the purpose of learning and harnessing the best tools to facilitate and empower the learning and researching process

Our Products



Forsina Anatomy 3D

Explore the female and male human body comprehensive structure in a stunning 3D environment covering every anatomical structure with full medical information for each one

Forsina Anatomy VR

Explore the female and male human body comprehensive structure in an immersive Virtual reality environment covering every anatomical structure with full medical information for each one



Forsina Dicom Converter 3D

Convert your DICOM files into a 3D module to be used in your desktop or mobile, this will allow you to explore your DICOM images in 3D environment

Forsina Dicom Converter VR

Convert your DICOM files into a Virtual Reality module to be used using your VR tool kit, this will allow you to explore your DICOM images in one of a kind experience you have never had before



Forsina Radiology 3D

Learn and understand how to read CT medical images, control the body density and frontal planes (axial, Sagittal, coronal) in a stunning 3D module created from over 120000 CT images for your studies

Forsina Radiology VR

Learn and understand how to read CT medical images, control the body density and frontal planes (axial, Sagittal, coronal) in an immersive VR module created from over 1 Million CT images for your studies

Quick Guide

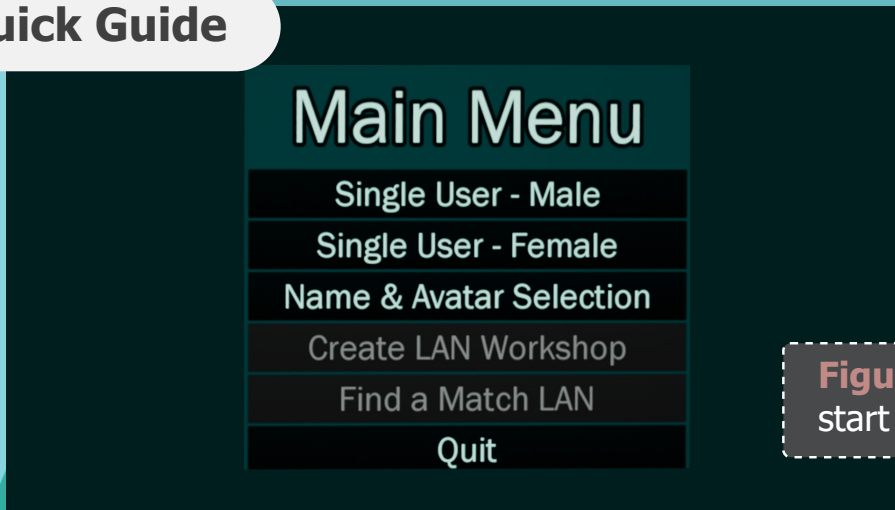
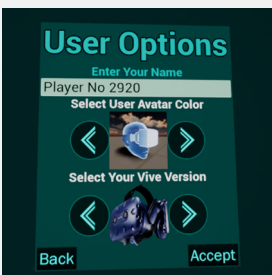


Figure 1
start screen

Button	Function
Single User - Male	Launch the application with male 3D model in VR environment as single user
Single User - Female	Launch the application with female 3D model in VR environment as single user
Name & Avatar Selection	Customize your name and avatar by: <ul style="list-style-type: none"> * Enter your name in the text * Change your avatar color to be identified when entering LAN workshop * Select your VIVE version



! For the best software performance always choose the right VIVE version

Button	Function
Create LAN Workshop	<p>Create a session to get other users involved.</p> <p>After choosing this option, insert the following:</p> <ul style="list-style-type: none"> ▶ Name of the session in the text field ▶ Number of users to determine how many users can join the session ▶ Select 3D body gender (Male or Female) ▶ Select accept by pointing at it with the laser using controller 1 and pressing A (trigger) to launch the application and start the session
Find a Match LAN	Joining a session
Quit	Close the application

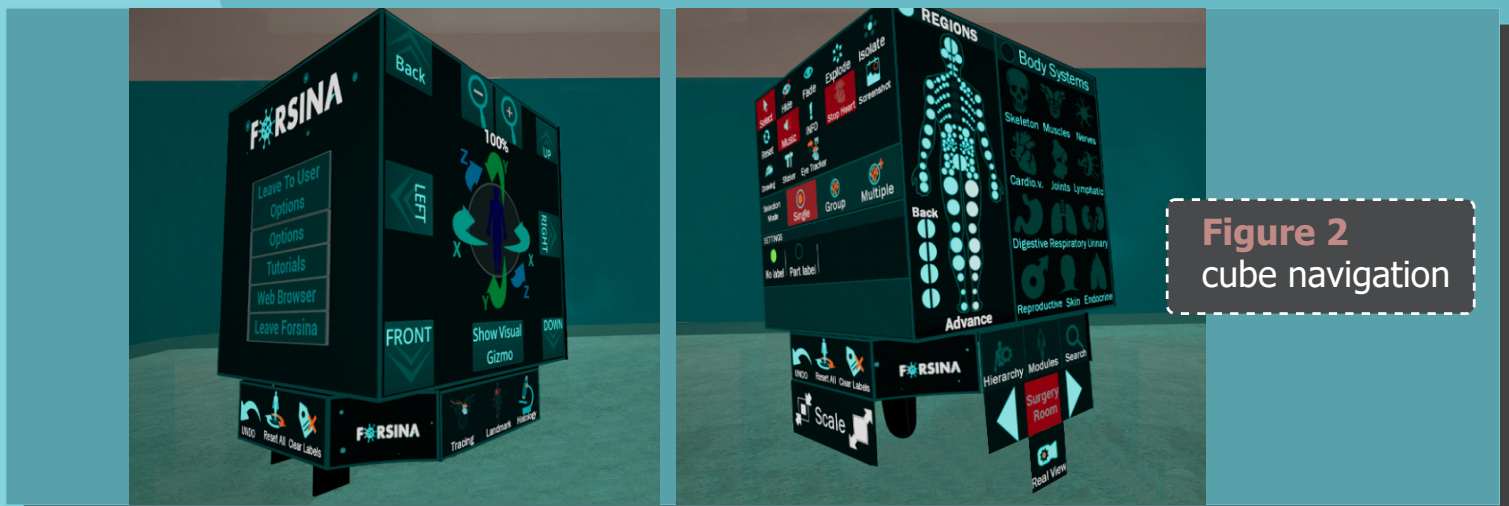


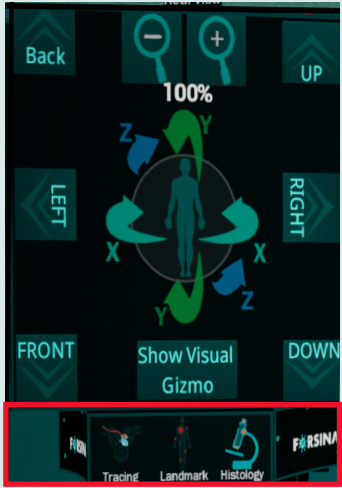
Figure 2
cube navigation



Button	Function
Leave to User Options	Bring the user back to the main menu (Figure 1 Start Screen)
Options	Display a set of options to set graphic details & resolution
Tutorials	Access video tutorials that fully explain how to use Forsina 3D Anatomy (Not available)
Web Browse	Surf the internet within the application
Leave Forsina	Exit Forsina Anatomy VR

Icon	Name	Function
	Undo	Revert last action
	Reset All	Reset single part/group/multiple to its original location
	Clear Labels	Remove all body part labels

! Undo function will revert the last action as it was taken (if you select a group it will revert all the group back)



Move the body into the front (Z axis)

Move the body to back (Z axis)

Move the body up (Y axis)

Move the body down (Y axis)

Move the body to the left (X axis)

Move the body to the right (X axis)

Zoom in to the body

Zoom out of the body

Show Visual Gizmo Showing visual (X,Y,Z) axes arrows on the body

Num.	Icon	Name	Function
1		Transform Panel	By using the tools and buttons on this Panel you can move the body in the 3D scene
2		Tracing	Allows the user to observe and follow the path of blood or nerve impulses within their respective networks in the body
		Landmarks	Displays a group of labels that appear on the selected part from the selected system
		Histology	Used to allow the user to view information and images related to the cell and tissue structure of the selected part

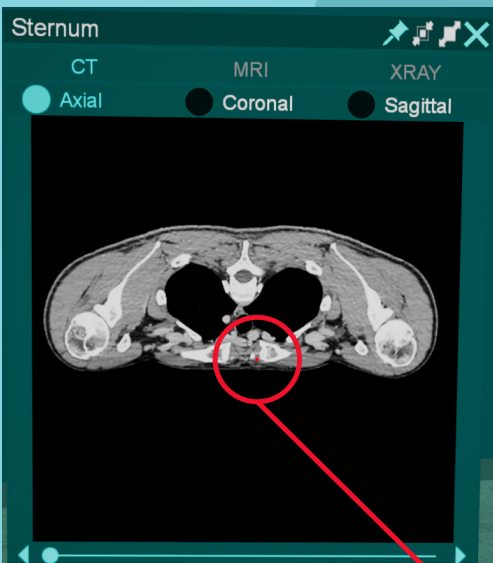
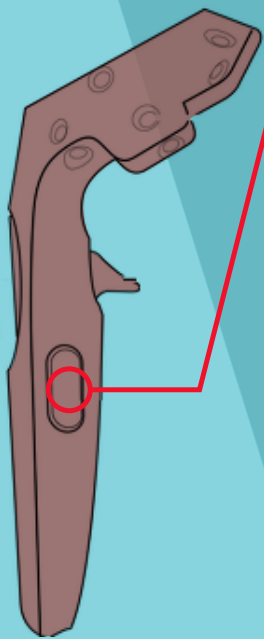


- ! Note that you can control the body by clicking at any arrow in gizmo
- ! Pressing on the body image icon the camera will return to the default pose

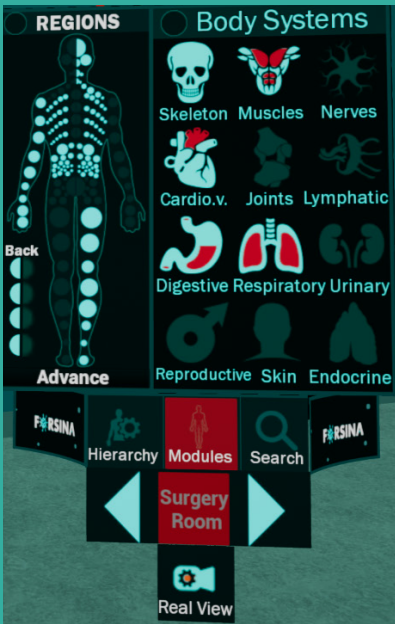
Num.	Icon	Name	Function
2.1		Tracing	<p>click on then</p> <p>Select the system </p> <p>click Select Part choose the part from the VR model.</p> <p>All possible paths will be listed</p> <p>Click to isolate the selected path</p> <p>Click to fade other paths</p> <p>Click for detailed information of the path</p>
2.2		Landmarks	<p>Click select the body part from VR model to see all landmarks on the part</p> <p>Click to show/hide landmark number</p> <p>Click for detailed information</p>
<p>! To show all landmarks / hide All click on Show All Landmarks</p>			
2.3		Histology	<p>Click select any part from the VR model.</p> <p>Full description with tissue image will be show related to the selected part</p> <p> used to move between pictures</p>



Num.	Icon	Name	Function
1		Select	Select a part to control it
		Hide	Make the selected part/group invisible
		Fade	Make the selected part/group transparent and see underneath layer
		Explode	Expand the selected part to its primary segments
		Isolate	Isolate the selected part/group from the whole body in VR view
2		Reset	Reset selected part/group to its original position by clicking on it
		Music	Play/stop background music
		Information	Used to hide/show the information panel for the selected part
		Organ Motion	Play/stop the motion of the organ
		Screenshot	Takes a screenshot for your current view
	! (Use Grip button on the controller as a quick snapshot shortcut)		
3		Drawing	Used to draw on a separate board or directly on the model
		Stickers	Allows to create a sticker for any part he desires
		Eye Tracker	Displays a black dot that represents the spot where the user is looking
		Syllabus	Manage/edit your syllabus (comming soon)
4		Single selection	Allows select/Hide/fade/isolate a single part of the human body
		Group selection	Allows select/Hide/fade/isolate a group of the human body
		Multiple selection	Allows select/Hide/fade/isolate a multi parts of the human body
5		No Label	focus on the selected part without an indication of it by a label
		Part label	Select a body part/group with an indication of it by showing label
6		Forsina Store	Visit The store to check out Forsina's latest products
		Help Center	View product manuals, FAQ's, setup guides and more
		Radiology	View CT/MRI/X-ray images for any part in any of the three planes
7		Scale down	Reduce the size of the cube by 10% for each click
		Scale up	Used to enlarge the cube by 10% for each click



Num.	Icon	Name	Function
1		Close	Close the current window
		Scale up	Increase the size of the window by %10
		Scale down	Decrease the size of the window by %10
		Pin	Pin down the current view on the wall
2		CT	Browse CT images for the selected part
		MRI	Browse MRI images for the selected part
		XRAY	Browse X-Ray images for the selected part
3		Axial plane	Use to view the image in Axial plane
		Coronal plane	Use to view the image in Coronal plane
		Sagittal plane	Use to view the image in Sagittal plane
4		Medical image	Red dot shows the selected point as a landmark
		landmark	landmark on the CT/MRI/Xray image
! Landmark on medical images will remain visibile in a dynamic manner as you move across all the slides that show the organ or structure			
			Navigation arrows Use the to move between slices



Num.	Icon	Name	Function
1		Regions component	A small sample of a dotted human body is displayed in order to turn on/off the dots to show/hide the human body regions in VR
		Body Systems component	Open advanced region to activate advance body structure view in more details, for example (show all nerve system, blood vessels) Enables you to hide/show the human body systems in VR (Skeletal system, Muscular system, Cardiovascular system, Nervous system, Lymphatic system, Joints system, Endocrine system, Digestive system, Urinary system, Respiratory system, Reproductive system, Integumentary system)
2		Hierarchy	Display the Hierarchy panel that allows the user to discover the systems and their parts and groups in a hierarchical list Allows to expand the hierarchial list Show/hide the part in VR
		Modules	Display the Modules panel which shows all available modules ability to edit/create new module to be customized View pre-created modules from Forsina View Modules created and customized by the user
		Search	Search button is used to search for a specific part or group or landmark Filter search results (by Part/Group or System)
3		Surgery room	The default VR room where application starts
4		Real View	Allow you to see the human body in the actual room you are in
	Switch off the surgery room by clicking on it, you can change the background color using		
This will turn on the VR headset camera, so modules might not have this feature			